

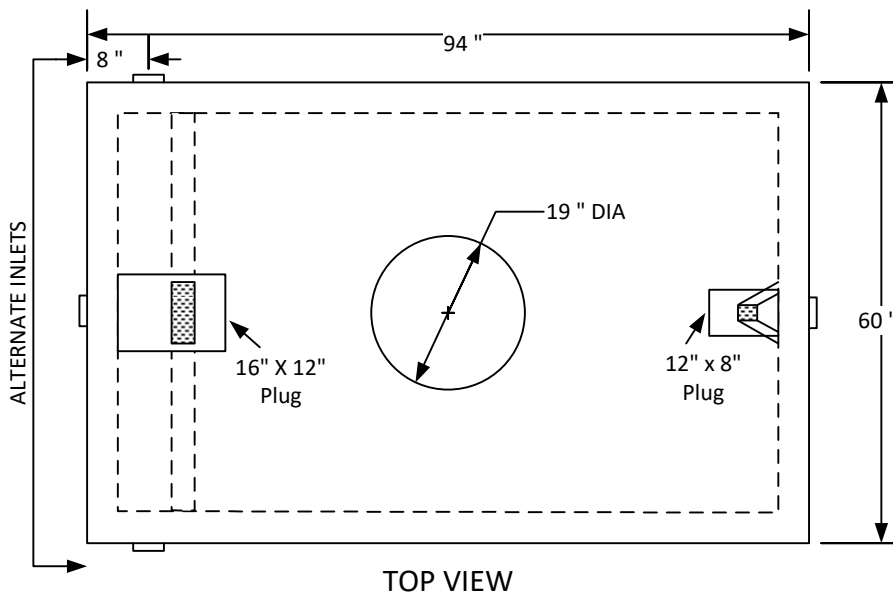
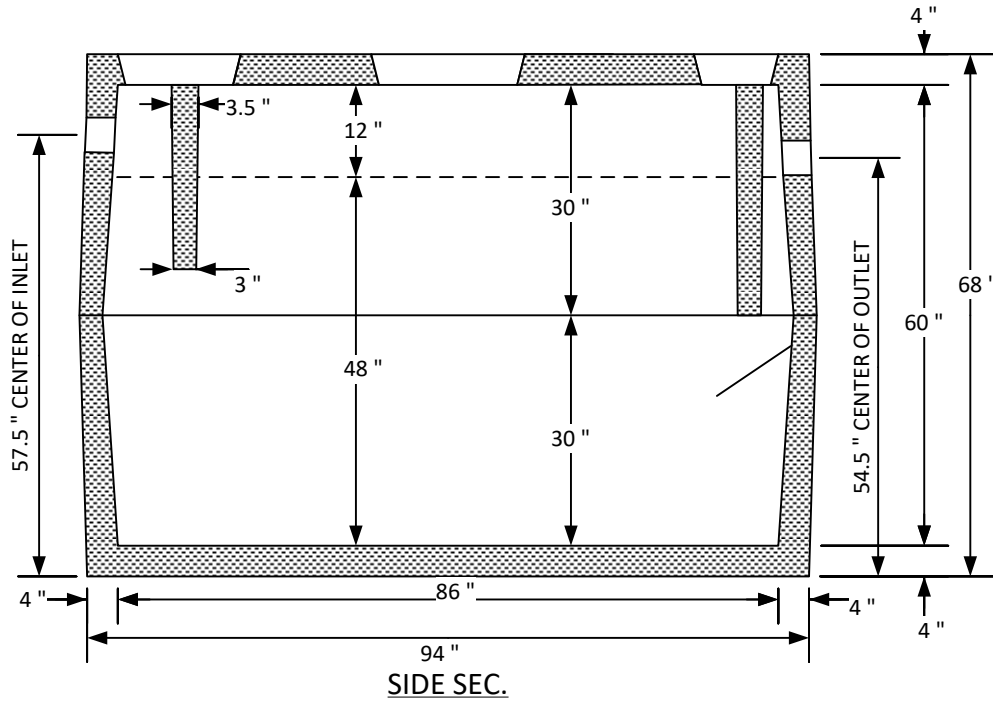


**KOHLEN CONCRETE PRODUCTS, INC.**  
Since 1952

1126 Old Carlyle Rd, Germantown, IL 62245 | Phone: 618-523-4266 | Belleville Phone: 618-277-2120 | Fax: 618-523-4751 | [www.kohlenconcrete.com](http://www.kohlenconcrete.com)

**1000 GALLON REINFORCED CONCRETE SEPTIC TANK**

EXCAVATION SIZE: 9' L X 6' W



WEIGHT: 8,125 LBS

THIS STRUCTURE IS NOT DESIGNED FOR VEHICULAR TRAFFIC OR MORE THAN 4' OF COVER OVER THE TOP OF THE TANK.