



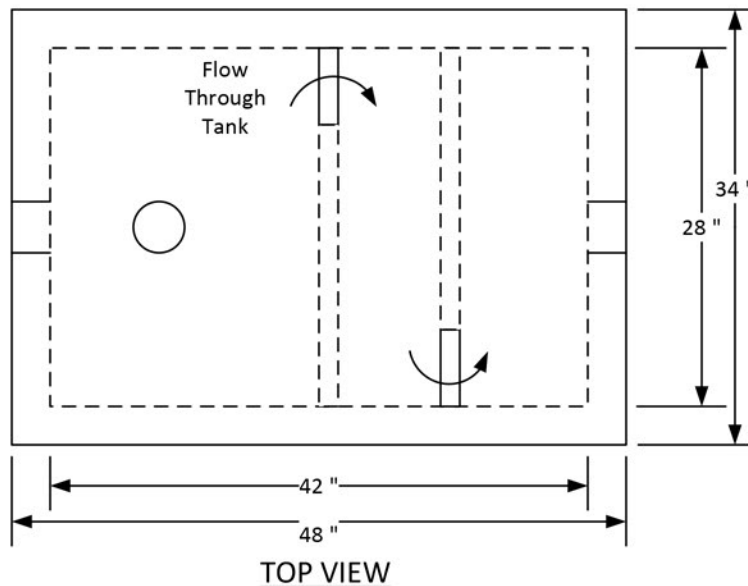
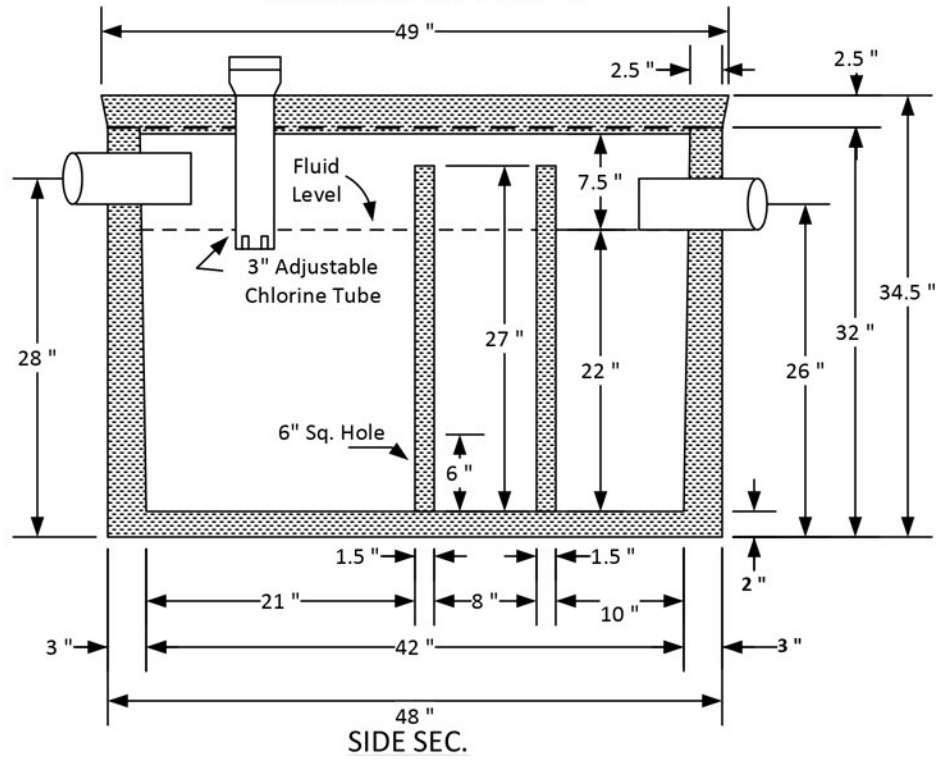
# KOHLEN CONCRETE PRODUCTS, INC.

Since 1952

1126 Old Carlyle Rd, Germantown, IL 62245 | Phone: 618-523-4266 | Belleville Phone: 618-277-2120 | Fax: 618-523-4751 | [www.kohlenconcrete.com](http://www.kohlenconcrete.com)

## 115 GALLON CONCRETE CHLORINE TANK

EXCAVATION SIZE: 6' L X 4' W



WEIGHT: 1,720 LBS

- \* THE CHLORINE TUBE SHOULD BE ADJUSTED TO BE APPROXIMATELY 1" IN THE WATER
- \* THE TUBE IS NOT GLUED INTO THE TOP COUPLING SO IT CAN BE CUT TO LENGTH
- \* CHLORINE TABLETS ARE AVAILABLE