

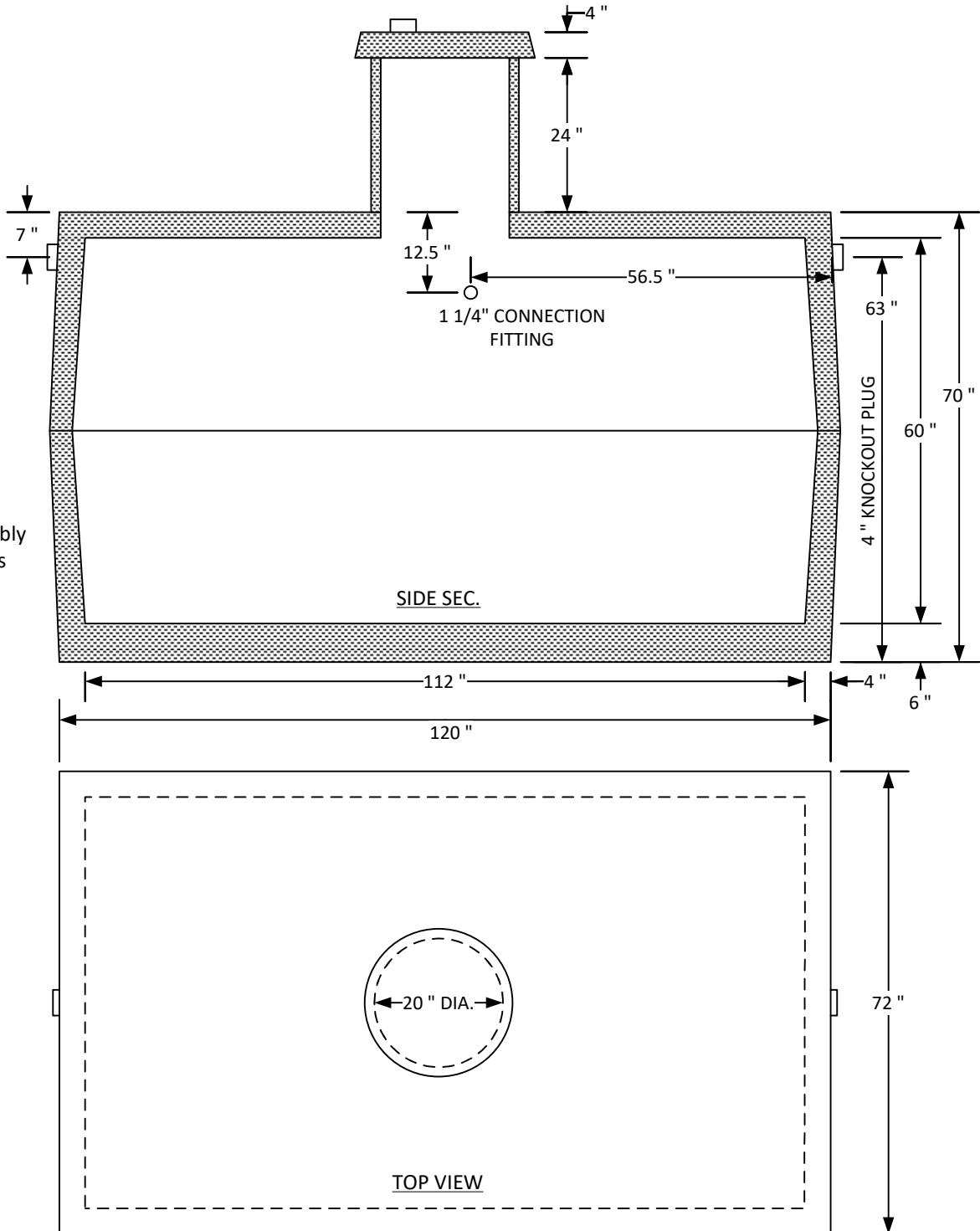


KOHNNEN CONCRETE PRODUCTS, INC.
Since 1952

1126 Old Carlyle Rd, Germantown, IL 62245 | Phone: 618-523-4266 | Belleville Phone: 618-277-2120 | Fax: 618-523-4751 | www.kohnnenconcrete.com

2000 GALLON CONCRETE RECTANGULAR CISTERN

EXCAVATION SIZE: 12' L X 7' 6" W



WEIGHT: 13,075 LBS

4" OF SAND UNDER TANK REQUIRED FOR PROPER SUPPORT