



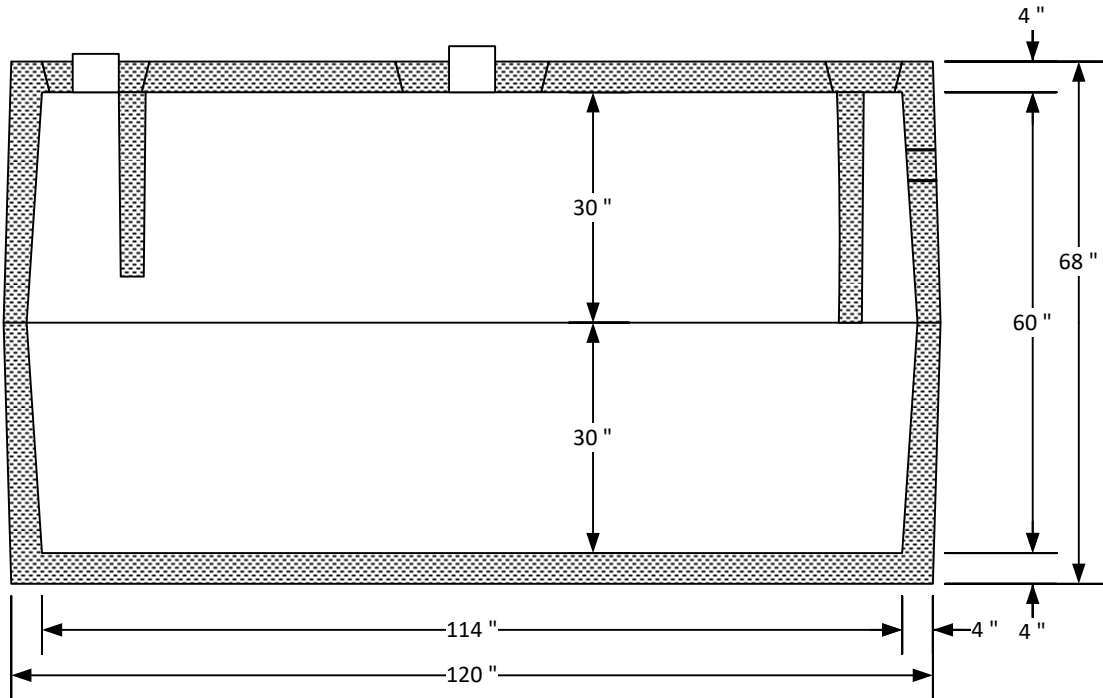
KOHEN CONCRETE PRODUCTS, INC.

Since 1952

1126 Old Carlyle Rd, Germantown, IL 62245 | Phone: 618-523-4266 | Belleville Phone: 618-277-2120 | Fax: 618-523-4751 | www.kohencrete.com

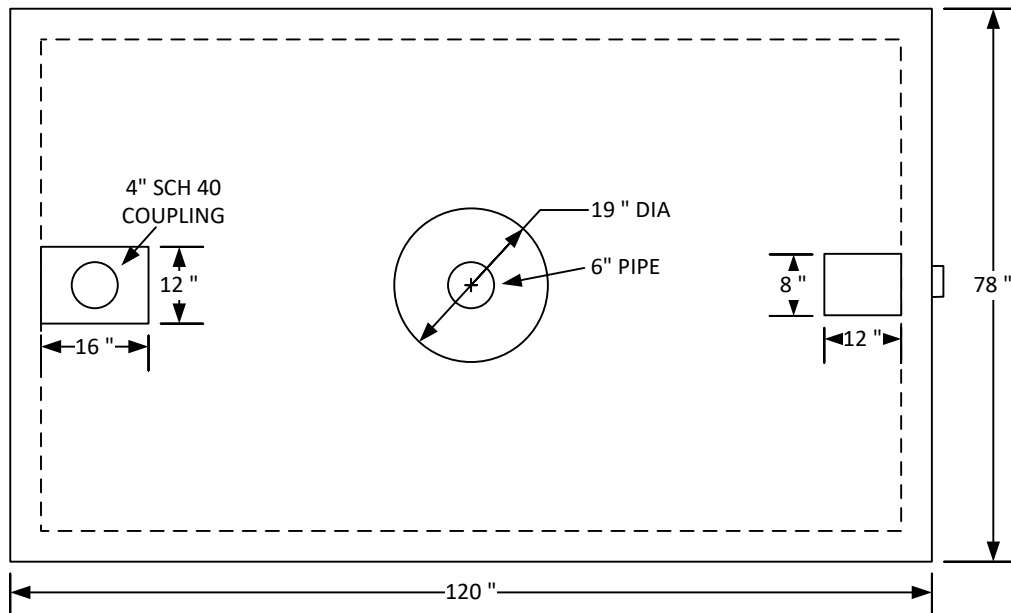
2000 GALLON REINFORCED CONCRETE HOLDING TANK

EXCAVATION SIZE: 11' L X 7' W



SIDE VIEW

ACCESSORIES HIGH LEVEL ALARM



TOP VIEW

WEIGHT: 11,300 LBS

INCLUDES A 2' LONG 6" DIA. RISER PIPE WITH CAP FOR THE CENTER LID PUMP OUT PORT. FOR FULL CAPACITY ROUTE INLET INTO TOP OF THE TANK.